

Waterproof Interruption Logger

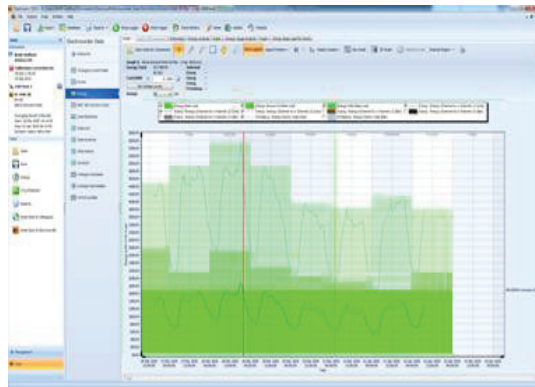
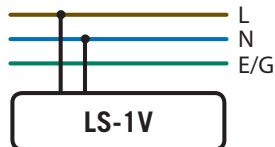
1Ø

1V

300V

IP65

NEMA 12/4



- Records the date and times of loss and regain of mains voltage supply.
- Allows engineers to quickly and cost effectively monitor supply interruptions.
- Small, safe & easy to use, waterproof to IP65!
- User set-able voltage threshold which defines the loss of supply, e.g. loss can be user set as voltages below 100V.
- Windows based software, displays tabular & graphical data.

Single Phase 300Vac (Live/Hot to Neutral)

Constant Sampling technique; misses very little data

Complete with Electrosoft energy analysis software

Available as IP65/NEMA 12/4



- Kit includes Logger, Electrosoft, Serial Lead & Instructions.
- Recorded data is uploaded to a PC for analysis with supplied free software - Electrosoft.
- Software includes internal database to allow Engineers to trace the whereabouts of units in the field.
- Software allows graphical and statistical analysis of data.
- Memory (non-volatile) capacity of 64k, can record up to 6,000 interruptions.
- **ORDER CODE:-**
LS-1V/IP65

ELECTROCORDER

Model: LS-1V

The LS-1V is designed to allow electrical power distribution companies to cost effectively monitor their network for the loss and regain of supply (interruptions) to their customers; based on loss of mains voltage.

The LS-1V will record the date and times of up to 16,000 interruptions of supply with a minimum resolution of one second. The memory will wrapround when full, allowing the logger to record ad-finitum.

Setting-up is easy; using the supplied software; simply input the customer's name and address or the location on the network where the will monitor. This data is then stored in the unit's memory. The user must input the threshold voltage, which defines the loss of supply, for example on a 230V system, voltages below 175V may be considered as a loss of supply, this can be input via the software.

The software will print the necessary documentation. All data is stored in a database of dispatches and returns, so that users may track and record the location of loggers.

Why is the ElectroCorder better than other similarly priced competitors? The ElectroCorder range use a constant sampling technique, unlike the single reading of competitors. When the loggers start to record, they sample every channel 16 times per cycle, a cycle is 16ms at 60Hz and 20ms t 50Hz.

The Voltage Analysis conforms to the European recording standard EN50160: 1994 - "Voltage characteristics of electricity supplied by public distribution systems."

Recording is shown by a flashing green LED. The LS-1V is in a waterproof case, sealed to IP65.

When recording, the LS-1V will store the date, time and duration of losses and regains of mains voltage supply.

With the back-up battery, the LS-1V can continue to record for 8 months without mains supply during power cuts or interruptions. While mains voltage is available the battery life is up to 10 years.

When the unit has been returned to the power company, the stored data is uploaded to a PC via the supplied RS-232 cable. Using the software, the recorded interruption's dates & times can be viewed and printed in both graphical and tabular form, exported (to a spreadsheet) or saved to file.

Graphs can be printed showing results and a statistical analysis is shown. These results may then be discussed with the customer. The Software also provides an internal database, which effectively manages the task of monitoring the location of many units.

The product comes complete with Software, Serial Lead, Battery, User Instructions, has a flying lead and is sealed to IP65.

TECHNICAL SPECIFICATIONS (subject to change without notice)

Measurement range	30V to 300Vac
Measurement accuracy	±1% of reading (within 70 - 260Vac); else ±5%
Measurement of Voltage	Always one cycle (50/60 Hz), independent of averaging period set
Sampling frequency	32 samples per cycle (1920Hz (60Hz) / 1600Hz (50Hz))
Data recorded	Time in seconds between interruptions and regain of mains voltage supply
Memory capacity	16,000, Sixteen Thousand Interruptions. Memory size of 64kB
Memory type	Non-volatile SEEPR0M
Memory endurance	100,000 - 1,000,000 read/write cycles
Real-time clock accuracy	10 ppm; 25 sec. per month or 2.59 mins per 6-months or 5.25 mins per year.
Battery life (while plugged in)	10 years while mains powered & battery backup of 7000 hours, 8 months (while unpowered).
Interface type	One Communications Port - RS-232 serial, 56k baud, optically isolated to 3000V.
Electrosoft Software	Windows (2K, ME, NT, Vista, Windows 7); 1024 x 768 min resolution
Environmental (temp & sealing)	-10°C to +55°C, RH 95% non-condensing - Model LS-1V-IP65 is sealed to IP65
Dimensions & Weight	Metric 100 x 85 x 65mm & 300g
Recording Standard	EN50160: 1994

WARRANTY & CALIBRATION - This product has a two year warranty covering manufacturing defects and component failures. Each unit is individually calibrated during testing.

CONFORMITY - Emissions EN55022:1994B, (EN50081-1:1992).Immunity EN50082-2:1995, following the provisions of EMC directive 89/336/EEC. Recording std EN50160:1994. LVD 72/23/EEC with respect to EN60065. (IEC-61010). All models certified (light industrial, 3V/m).

ORDERING - LS-1V System - includes logger, software, battery, user guide, serial lead & case.

	PLUG STD	COUNTRY	ENVIRONMENTAL SEALING	ORDER CODE
	AS3112, NZ SS 198-1967	Australia, New Zeland	IP65, NEMA 12/4	LS-1V/ANZ-KIT
	CEE 7/16	Europe	IP65, NEMA 12/4	LS-1V/EU-KIT
	NEMA 5-15	North America	IP65, NEMA 12/4	LS-1V/NA-KIT
	BS 1363	United Kingdom & Ireland etc.	IP65, NEMA 12/4	LS-1V/UKI-KIT
IP65	None - Flying lead	All Countries	IP65, NEMA 12/4	LS-1V/IP65-KIT
RS-232 Serial Lead - EC-SL-REDEL		Mailing Case EC-1V-CC		

Tel: +44 (0)870 225 1790
Fax: +44 (0)870 225 1791

Email: sales@electrocorder.com
Internet: www.electrocorder.com