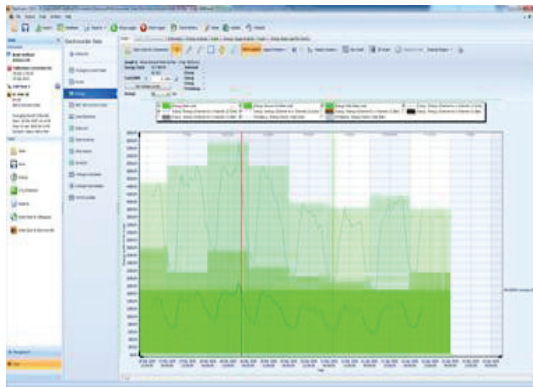
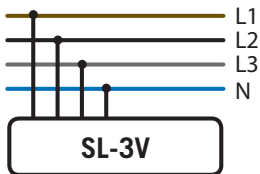
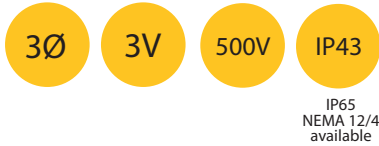


Miniature 3 Phase Logger



Three phase; 500Vac (L1, L2 & L3 to Neutral) 145x89x45mm (6"x4"x2")

Constant Sampling technique; misses very little data

Complete with Electrosoft energy analysis software

Available as IP65/NEMA 12/4



- Small size 145x89x46mm, enables voltage problems to be highlighted quickly for further investigation.
- Allows engineers to quickly and cost effectively monitor & resolve single & 3-phase voltage problems.
- Three phase inputs (L1, L2, & L3) & Neutral (N). Use also for single phase logging also!
- Record V_{Avg} , V_{Max} & V_{Min} with date & time & stores in non-volatile memory.
- Recorded data is uploaded to a PC for analysis with Electrosoft. Electrosoft includes a database to ensure effective management of distributed loggers.
- Kit includes Logger, Carry Case, Electrosoft, four input leads & RS-232 serial lead.
- Selectable averaging period to suit each situation, accurate to $\pm 2\%$ of reading.
- Memory capacity of 32,000 (true RMS) values per channel (10bit), up to 300 days continuous recording.
- Order code:-
SL-3V-50-KIT (50Hz)
SL-3V-60-KIT (60Hz)

ELECTROCORDER

Model: **SL-3V**

The ElectroCorder range is designed to allow electrical distribution companies to cost effectively monitor single and three phase supplies. Our products allow voltage problems to be highlighted quickly for further investigation using more sophisticated loggers.

Setting up the ElectroCorder is easy, suitable for semi-technical staff. Using the supplied Windows software, Electrosoft; the location's details are input to the unit's memory and stored. Electrosoft will then print documentation allowing users to record and/or pass on delivery instructions to colleagues. All data is also stored in a database of dispatches and returns, which tracks the whereabouts of all units.

Why is the ElectroCorder better than other similarly priced competitors? The ElectroCorder range use a constant sampling technique, unlike the single reading of competitors. When the loggers start to record, they sample every channel 16 times per cycle, a cycle is 16ms at 60Hz and 20ms at 50Hz. At the end of each averaging period, 3 quantities are saved for each channel, the True RMS average, the Max, which is the highest cycle value during the period and the Min, lowest cycle value. This means that it will record all the peaks and troughs which are one cycle or longer.

When recording the ElectroCorder will store the average voltage over the period chosen (1 sec to 60 min), it will also record the highest (max) & lowest (min) cycle values during that period.

The voltage levels are stored with dates and times. With the back-up battery, the ElectroCorder can continue to record for a year.

When the logger has been returned to the power company, the stored data is uploaded to a PC via the supplied RS-232 cable. Using Electrosoft, the recorded voltage levels, dates & times can be viewed in both tabular and graphical form, exported to a spreadsheet or saved to file.

Graphs can be printed showing the recorded levels and the allowable tolerance bands. These results may then be discussed with the customer. Electrosoft also provides an internal database which effectively manages the distribution of multiple units.

Upload the data from the ElectroCorder and analyse it using Electrosoft. From this you can generate a report on the results and discuss with your customer what further action is needed.

On the logger, recording is signified by a flashing red light. A green light advises users that the unit has completed recording.

There are many models of ElectroCorder voltage and current loggers. The ElectroCorder conforms to the European recording standard EN50160: 1994 - "Voltage characteristics of electricity supplied by public distribution systems."

TECHNICAL SPECIFICATIONS (subject to change without notice)

Measurement range (Vrms)	0Vac to 600Vrms (Ph – Ph) or 0V to 350Vrms (Ph – N)
Maximum channel input voltage	600Vrms (Ph – Ph), 350Vrms (Ph – N) or 850Vpeak
Inputs (non-isolated inputs)	Three phase inputs (L1, L2 & L3) & Neutral (N), Non-isolated input channels
Input socket types	4mm shrouded 'banana' plugs & sockets, each with insulated crocodile clip
Measurement accuracy	±1% of reading (10 bit) within 90Vac - 450Vrms (ph – ph); else ±3%. (50/60Hz ±2%)
V _{max} , V _{min} , I _{max} & I _{min} time resolution	Always one cycle (50/60 Hz), independent of selected averaging period
Sampling frequency	16 samples per cycle 800Hz @ 50Hz or 960Hz @ 60Hz
Data recorded	Average voltage, max & min voltage-cycle-value during the averaging period
Memory capacity	192kB able to record 32,000 Voltage levels per phase.
Memory type	Non-volatile SEEPROM
Memory - averaging period & duration	1 sec to 60 mins (1 sec gives 2 hrs logging, 60 min gives up to 300 days logging)
Real-time clock accuracy	Greater than 0.001%
Input Lead Length	Metric 2 metres Imperial/English 6' 6" (6 feet, 6 inches)
Battery life (while plugged in)	Unlimited - mains powered & battery backup (8,000 hours, ~1 year while unpowered).
Battery Type	Unit contains one 9V Alkaline batteries (E-Block, PP3, 1604A)
Communications Interface type	RS-232 serial, baud of 19,200
Electrosoft Software	Windows (9x, 2K, ME, NT & XP); 1024 x 768 min resolution
Environmental (temp & sealing)	-10C to +40C or +14°F to +104°F – Indoor or protected environment only
Dimensions & Weight	Metric 145 x 89 x 46mm & 300g; Imperial/English - 6" x 3.5" x 2" & 0.6lbs
Standards	Recording - EN50160: 1994 - CAT III, maximum input voltage 600Vac

WARRANTY & CALIBRATION - All Ackson Ltd products carry a minimum of a one year's warranty covering manufacturing defects and component failures. Each unit is individually calibrated during testing.

CONFORMITY - Emissions EN55022:1994B, (EN50081-1:1992). Immunity EN50082-2:1995, following the provisions of EMC directive 89/336/EEC. Recording std EN50160:1994. LVD 72/23/EEC with respect to EN60065. (IEC-61010). All models certified (light industrial, 3V/m).

ORDERING - ElectroCorder SL-3V-**-KIT – inc. software, serial cable, four input leads & user guide.

	Description	ENVIRONMENTAL SEALING	ORDER CODE
1	Logger Kit (inc. items 2-6) -** (50 or 60 for 50Hz / 60Hz)	Protected or indoor only	SL-3V-**-KIT
2	Replacement – Logger Unit -** (50 or 60 for 50Hz or 60Hz)	Protected or indoor only	SL-3V-**-LOG
3	Replacement - Serial Lead	Protected or indoor only	EC364-Vm-SL1
4	Replacement – Input Leads *** (RED, BLK)	Protected or indoor only	EC364-Vm-UL-***
5	Replacement – Battery (1 per unit)	Internal to logger	EC364-Vm-BAT
6	OPTIONAL Fused Input Leads *** (RED, BLK)	CAT III 1kV, 500mA/1000V/50kA	EC364-Vm-FL-***
7	Spare Fuse for Fused Leads	500mA/1000V/50kA, ceramic	EC364-Vm-116048

Tel: +44 (0)870 225 1790
Fax: +44 (0)870 225 1791

Email: sales@electrocorder.com
Internet: www.electrocorder.com