

Fluke 433/434 PQ Monitoring and Reporting

PowerCET Operational Skills QuickRef #9

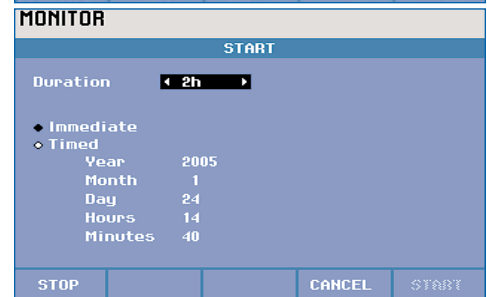
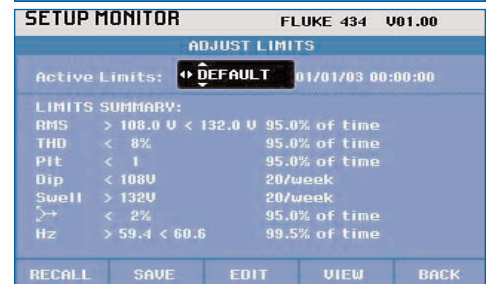
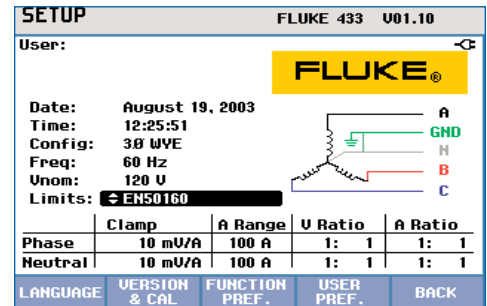
© 2005 PowerCET Corporation, all rights reserved

V.051005

Instrument Setup

Here you choose and/or edit a "Setup Limits" file in preparation for monitoring. Default 1: EN50160 or Default 2: DEFAULT meet most needs. Any custom setups are stored in Admin 1 & Admin 2, or User 1 & User 2

- Connect instrument voltage & current probes to circuit to be monitored
- Power On and press the **SETUP** key. Verify Correct Wiring **Configuration**, **Frequency** and **Vnominal**. Note **Limits: filename**
- If acceptable, skip to *Starting Monitoring* below. Else, arrow key to **Limits**, press **ENTER** key to view current limits summary
- If acceptable, skip to *Starting Monitoring* below. Else press **RECALL (F1)** to load another limits file, or **EDIT (F3)** to edit the current file and then **SAVE** it (F2) in the User 1 or User 2 memory location.
- Press **BACK (F5)** to return to the setup screen. Verify that the correct setup is shown



Starting/Stopping/Saving a PQ Monitoring Session

- Press the **MONITOR** key
- Use left/right arrow keys to pick the duration of the monitoring session
- Make sure **Immediate** is selected (black dot next to it)
- Press **START (F5)** to begin the monitoring session. Monitoring continues until end of duration, unless stopped manually

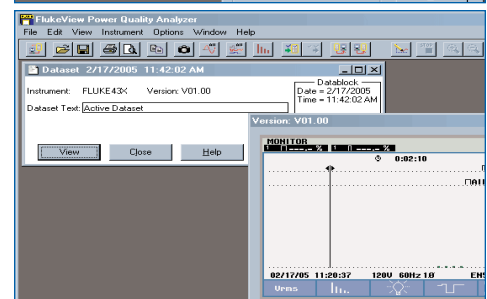
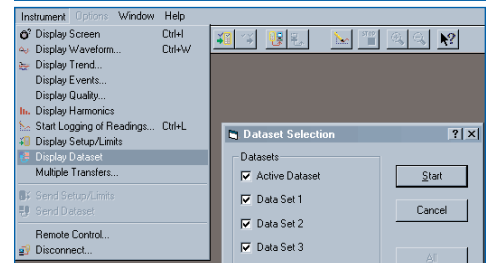
Ending a Session (manually) and Saving Data:

- Press the **MONITOR** key. Press **STOP (F1)**
- Press the **MEMORY** key. Press **SAVE (F3)**
- Use the arrow keys to name the file and press **OK (F5)**. *Save the dataset, or it will be lost when you leave the monitoring screen!*

Flukeview: Importing Datasets, Printing Reports

Here you import your monitoring data into your PC and format it for a report

- Connect the 433/434 to your PC and start Flukeview. It should automatically contact the instrument in preparation for data transfer
- Press the **SCOPE** key on the instrument and then **HOLD (F5)**
- Select **Display dataset** from the Instrument menu and then select your data from the datasets on the instrument and click **Start**.
- When the dataset is loaded, select **Save As** from the File menu. Give it a descriptive name and save as a Flukeview (.fvf) file



Export a text summary of a dataset into Microsoft Word:

- On the 433/434, Press the **MEMORY** key. Press **RECALL (F1)**. Choose a dataset, and press **USE (F5)**
- In Flukeview, Select **Display Quality** from the **Instrument** menu to load the data.
- Click on **View** to export the monitoring Summary into Microsoft word. Use this as an outline for your report

Add graphs from a dataset into Microsoft Word document:

- Open the saved dataset from the **File** menu and click **View**
- Select a trend or a waveform and click on the **Display Voltage & Current Waveform** or **Display Trend** button to graph it.
- Zoom in on the data plot, use cursors to tweak graph as desired
- Select **Copy Graphics** from the **Edit** menu and paste the graph into your word file at the appropriate spot. Repeat with other graphs to fill out your report as needed
- You may also **Save** these graphs with the dataset, or alone as data files for use with Excel or another graphing program

