

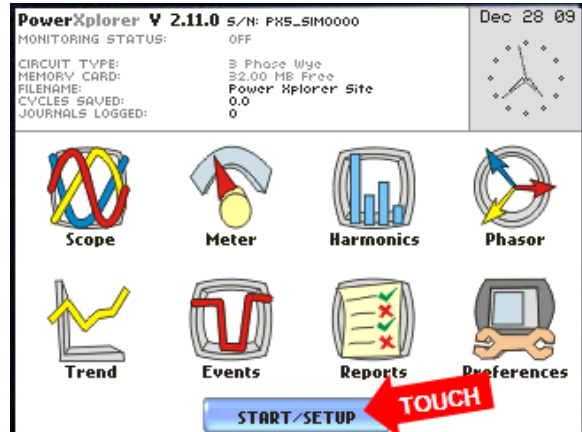
**DETAILED SETUP INSTRUCTIONS
LOADING & CONFIGURING SETUPS FROM A CF MEMORY CARD
DRANETZ PX5/PG4400/PV440**

Modifying Setups (Configurations) Loaded from a CF Memory Card

The following section takes the user through a detailed step-by-step procedure for loading setups from a compact flash (CF) memory card and the configuration changes required to successfully configure the setup for use with the Dranetz **PowerXplorer PX5**, **PowerGuide 4400** or **PowerVisa 440** monitor.

Initial setup/programming is always started from the MAIN MENU screen with the START/SETUP bar at the bottom.

Start by touching the **START/SETUP** bar.

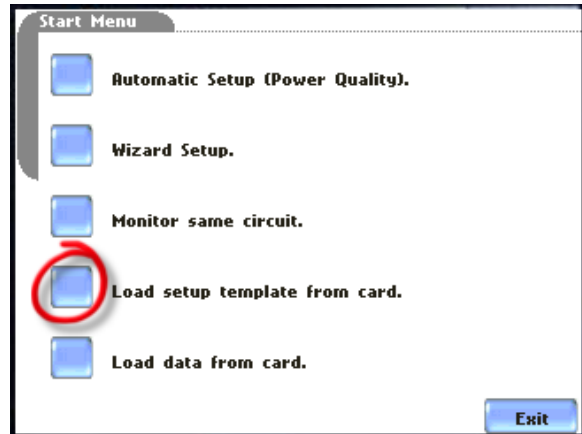


Screen 1

The next screen to appear will be the START MENU with 5 selections. Using the WIZARD SETUP is recommended for all initial setup activity.

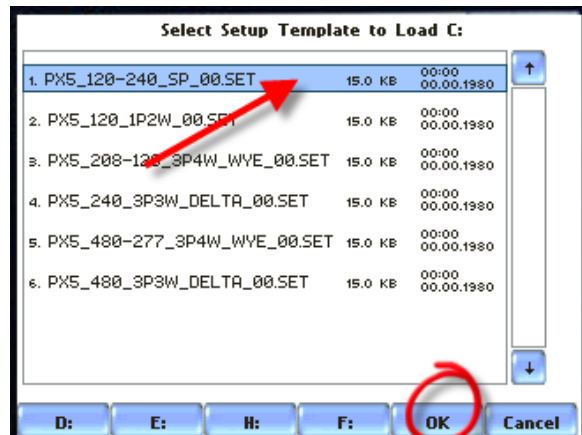
NOTE: If the monitor has already been programmed then MONITOR SAME CIRCUIT would be the selection. Selecting the "wizard" again will require complete reprogramming.

To load a saved setup touch **LOAD SETUP TEMPLATE FROM CARD** to proceed.



Screen 2

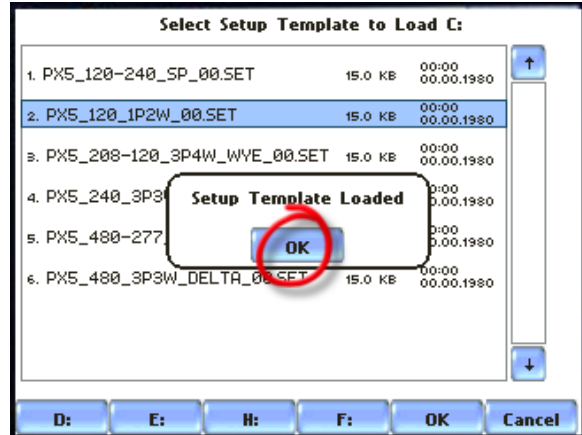
The SELECT SETUP TEMPLATE TO LOAD screen will appear. Select the desired setup and then select **OK**.



Screen 3

**DETAILED SETUP INSTRUCTIONS
LOADING & CONFIGURING SETUPS FROM A CF MEMORY CARD
DRANETZ PX5/PG4400/PV440**

The SETUP TEMPLATE LOADED message appears. Touch **OK**



Screen 4

After loading the setup template you will be returned to the MONITORING MENU screen.

It is necessary to change a few items to configure the template for the specific monitoring activity.

Touch **MODIFY TRIGGER PARAMETERS AND INTERVALS**.

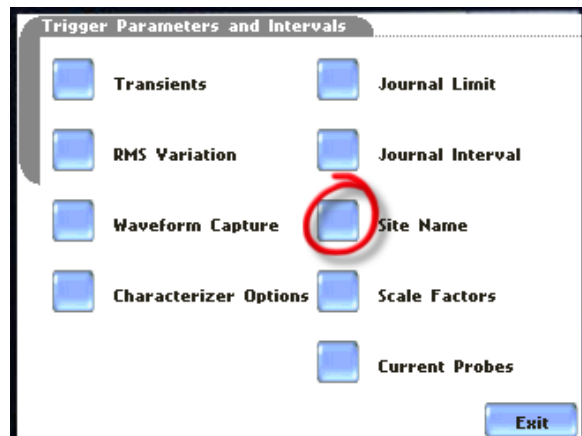


Screen 5

The TRIGGER PARAMETERS AND INTERVALS menu screen appears.

For sure the SITE NAME will need to be changed as loading the template changes the SITE NAME to the template filename.

Touch **SITE NAME** to continue.



Screen 6

**DETAILED SETUP INSTRUCTIONS
LOADING & CONFIGURING SETUPS FROM A CF MEMORY CARD
DRANETZ PX5/PG4400/PV440**

Use the on-screen keyboard to enter the desired site/filename and touch **OK** to continue.

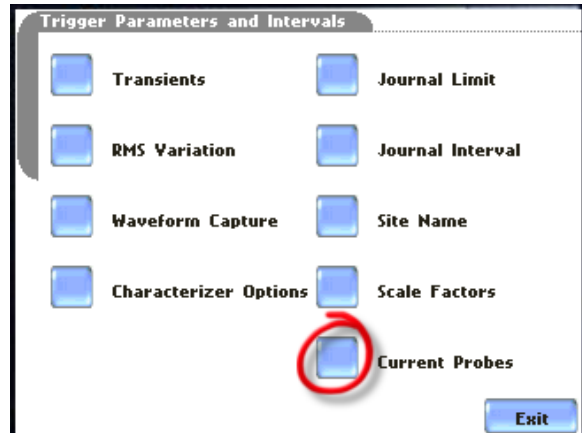


Screen 7

The TRIGGER PARAMETERS AND INTERVALS menu screen reappears.

Since there is no way of knowing which current probes would be used it will be necessary to program the appropriate current probes.

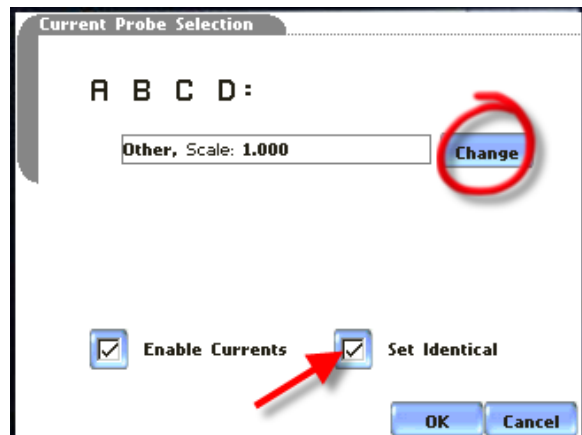
Touch **CURRENT PROBES** to continue.



Screen 8

The CURRENT PROBE SELECTION screen should appear. Check the SET IDENTICAL box if all current probes will be the same.

Touch **CHANGE** to select current probes.



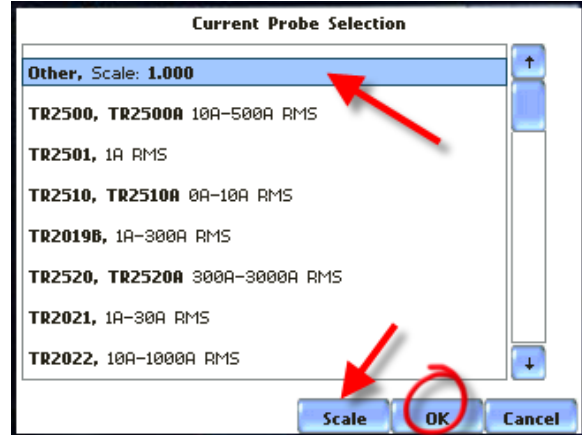
Screen 9

DETAILED SETUP INSTRUCTIONS LOADING & CONFIGURING SETUPS FROM A CF MEMORY CARD DRANETZ PX5/PG4400/PV440

The CURRENT PROBE SELECTION menu contains a scrollable list of 35 possible selections...34 of which are pre-programmed. Select the appropriate preprogrammed current probe or OTHER to manually set the necessary scale factor.

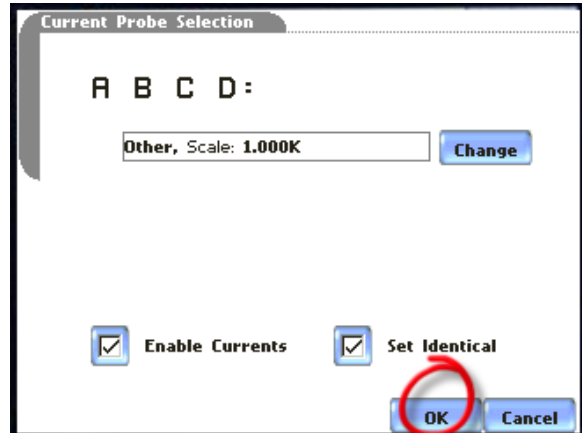
If using OTHER then touch **SCALE** to program the appropriate scale factor.

Once current probe selection process is complete touch **OK** to continue.



Screen 10

The CURRENT PROBE SELECTION screen reappears...verify that the current probe selection is correct and then touch **OK** to continue.

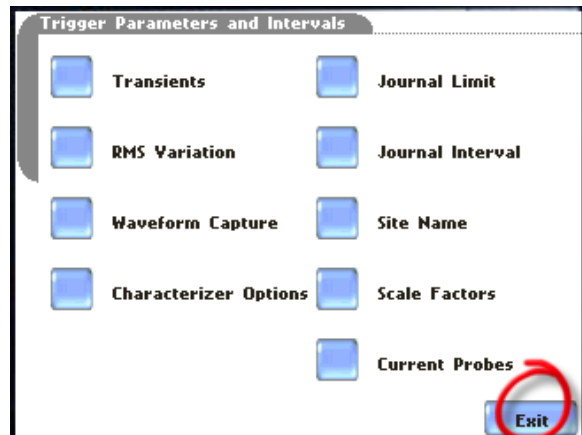


Screen 11

The TRIGGER PARAMETERS AND INTERVALS screen appears.

Depending on the monitoring requirements it may be necessary to program the current thresholds which are accessed through the TRANSIENTS and RMS VARIATION menu selections.

Touch **EXIT** to continue if no other programming is required.



Screen 12

**DETAILED SETUP INSTRUCTIONS
LOADING & CONFIGURING SETUPS FROM A CF MEMORY CARD
DRANETZ PX5/PG4400/PV440**

The MONITORING MENU appears

At this point the configuration loaded from the template has been changed. It is good practice to review the setup (monitor configuration) to make sure that it is correct and there are no obvious errors.

Touch **VIEW SETUP SUMMARY** to continue.

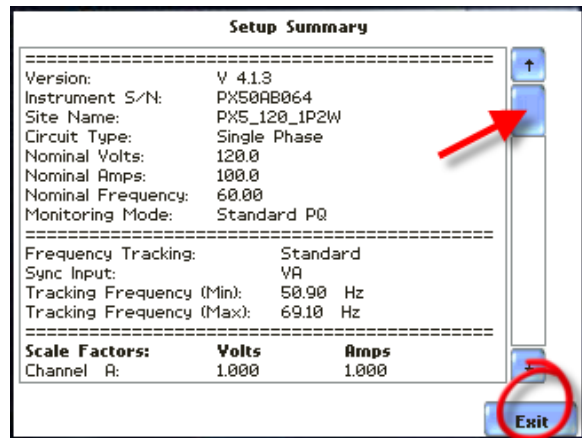


Screen 13

The SETUP SUMMARY screen appears.

Use the scroll bar to review the setup.

Touch **EXIT** when complete.

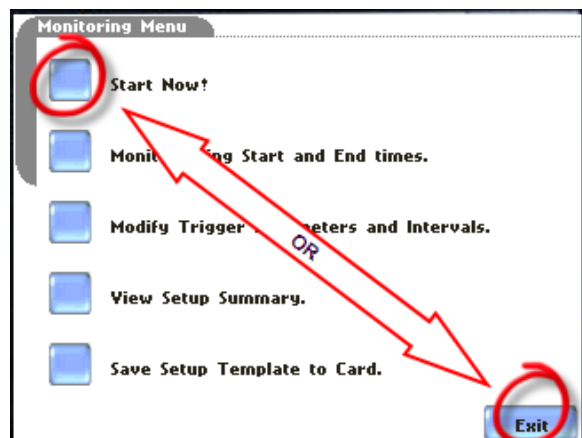


Screen 14

The MONITORING MENU screen reappears.

From this screen monitoring can be started with the START NOW selection or you may EXIT and start monitoring later. Note, the configuration changes will be saved internally to the monitor.

If monitoring is not started now then touch **EXIT** to return to the main screen.

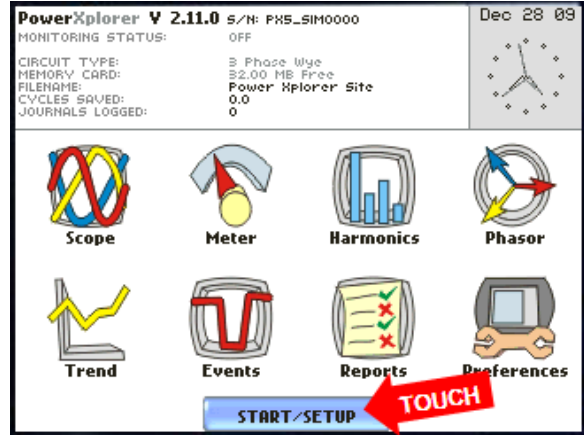


Screen 15

**DETAILED SETUP INSTRUCTIONS
LOADING & CONFIGURING SETUPS FROM A CF MEMORY CARD
DRANETZ PX5/PG4400/PV440**

The main START/SETUP icon menu screen will appear. You may use any of the icon menu selections to verify correction connection, etc. prior to starting the actual monitoring activity.

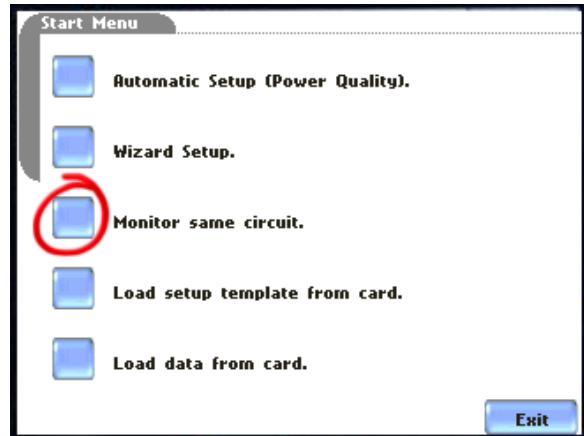
When ready to start monitoring touch the **START/SETUP**.



Screen 16

Touch **MONITOR SAME CIRCUIT** to continue.

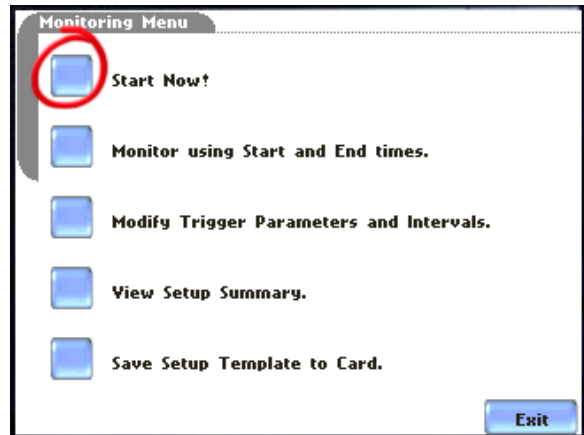
WARNING: If you touch the WIZARD SETUP the configuration data will be changed and it will be necessary manually reprogram the meter or reload the setup configuration from the memory card.



Screen 17

If there are not changes or modifications needed to the meter settings touch **START NOW!**

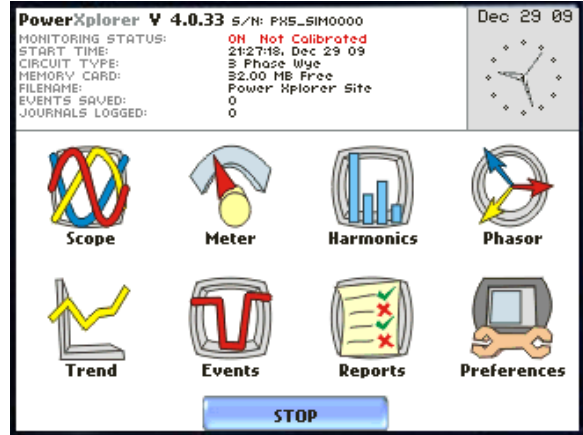
Monitoring will start and if there is an existing data file on the memory card the site/filename will be incremented by "1" and a new file created. Later, in DranView, it is possible to append multiple files together to create a seamless monitoring record if desired.



Screen 18

DETAILED SETUP INSTRUCTIONS
LOADING & CONFIGURING SETUPS FROM A CF MEMORY CARD
DRANETZ PX5/PG4400/PV440

The START/SETUP screen will appear indicating that recording has started, the time and date that it started and the filename.



Screen 19

Prepared by:
Bruce Lonie <BruceL@powercet.com>
PowerCET Corporation